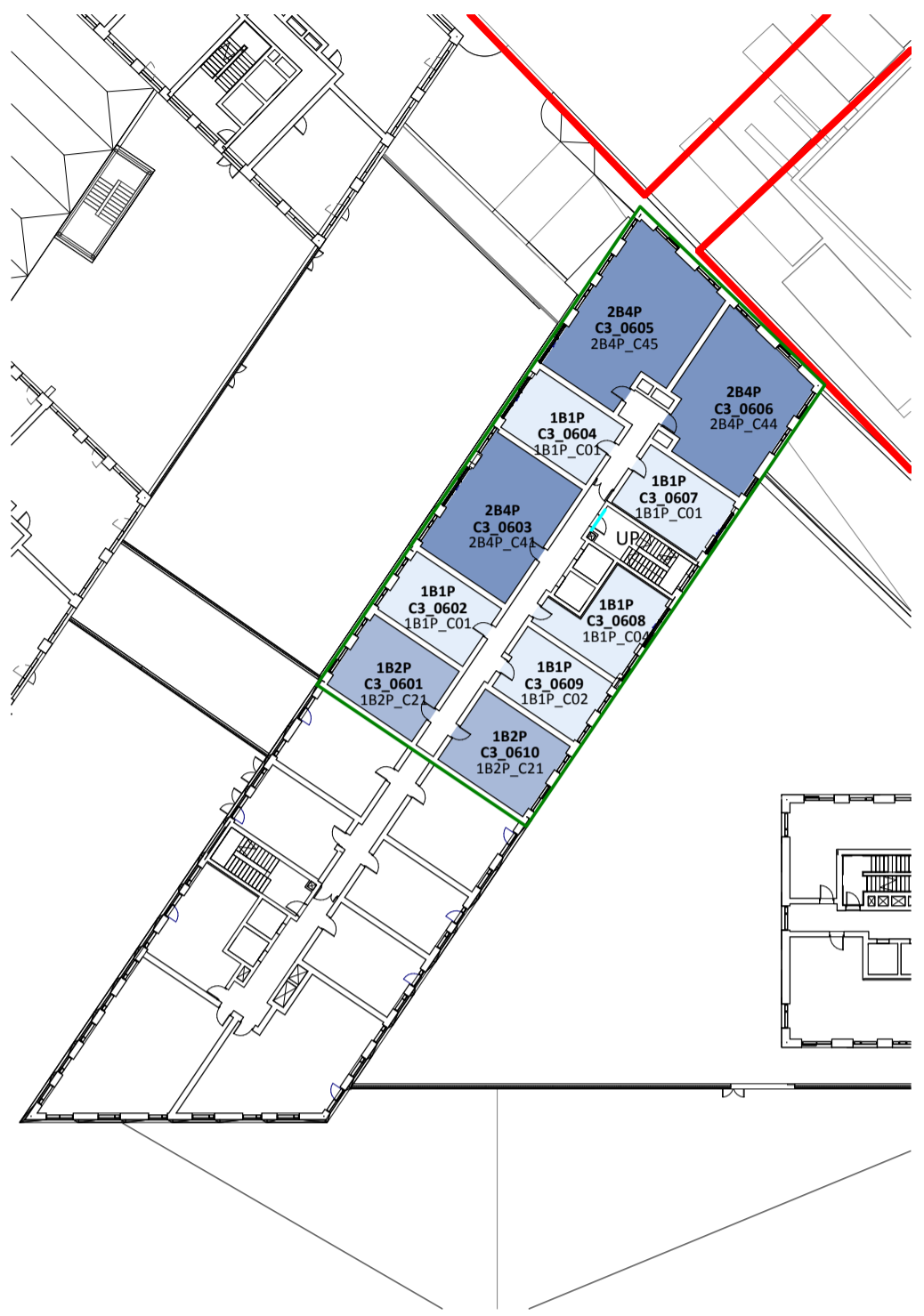
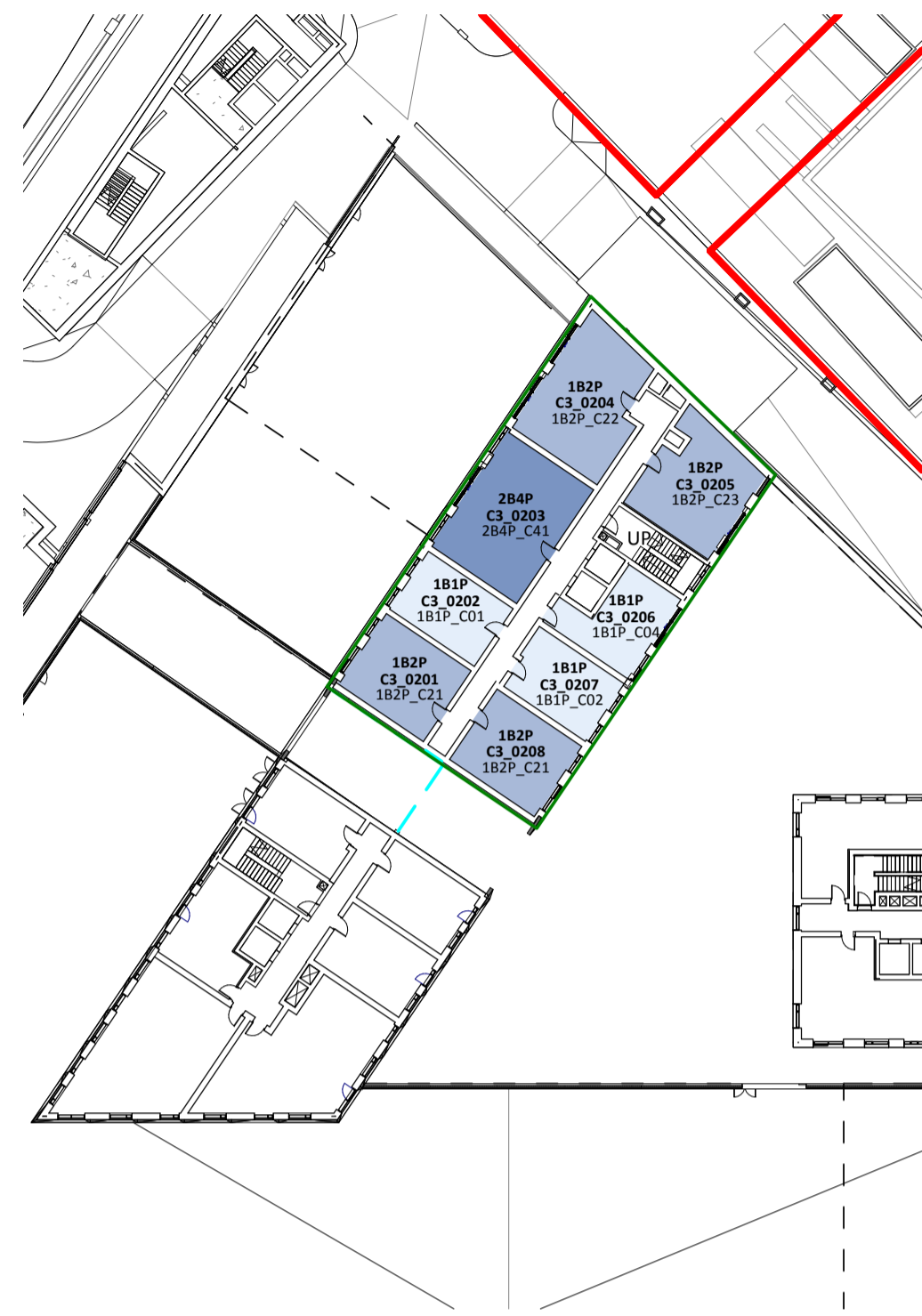


All dimensions to be checked on site. Figured dimensions take preference over scaled dimensions. Any errors or discrepancies to be reported to the Architects. This drawing may not be edited or modified by the recipient.

Copyright and ownership of this drawing is vested in RKD Architects, whose prior written consent is required for its use, reproduction or for publication to any third party. All rights reserved by the law of copyright and by international copyright conventions are reserved to RKD Architects and may be protected by court proceedings for damages and/or injunctions and costs.

RKD Architects' Quality Management Systems are certified to ISO 9001:2015.



1 L02 Block C3 - Part V Apartments
1:500

2 L03 Block C3 - Part V Apartments
1:500

3 L04 Block C3 - Part V Apartments
1:500

4 L05 Block C3 - Part V Apartments
1:500

5 L06 Block C3 - Part V Apartments
1:500

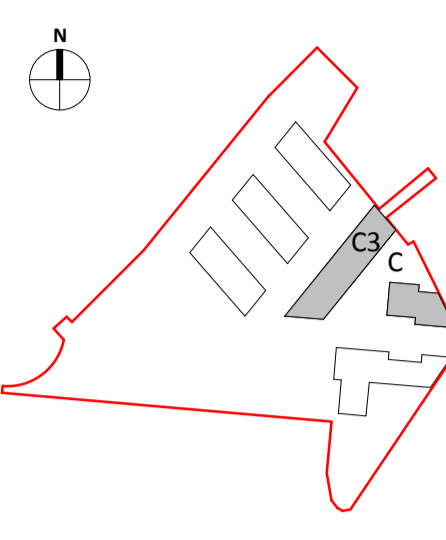


6 L07 Block C3 - Part V Apartments
1:500

7 L08 Block C3 - Part V Apartments
1:500

8 L09 Block C3 - Part V Apartments
1:500

9 L10 Block C3 - Part V Apartments
1:500



LEGEND

— SITE BOUNDARY

— Part V Apartments

USE

STUDIO APARTMENT

1 BED APARTMENT

2 BED APARTMENT

3 BED APARTMENT

PART V APARTMENT MIX	
STUDIO	36
1 BED	16
2 BED	23
TOTAL PART V UNITS	75

A OCT 2019 Issued for Planning Application Submission

Rev.	Date	Description

STATUS: **PLANNING**

PROJECT: THE CONNOLLY QUARTER

PROJECT ADDRESS: Lands to the Rear of Connolly Station, Dublin 1

DWG TITLE: Part V Proposed Plans

DWG NO: 18135-RKD-00-ZZ-DR-A-1060

REV.	PROJECT NO.	SCALE
A	18135	As indicated

DATE: JUN 2019 DRN EC CHK SG

RKD

59 Northumberland Rd
Ballinacorney, Dublin 4
D04 W P86, Ireland

+353 1 668 1055
info@rkd.ie
rkd.ie

ARROW

Nørre Farimagsgade 13, 4th fl.
DK-1364 Copenhagen K
Denmark

+45 4226 2860
info@arrowarchitects.com
www.arrowarchitects.com